

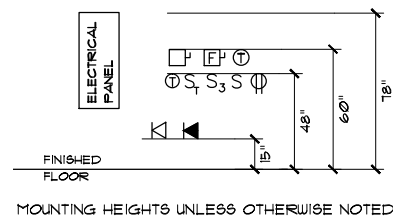
- E1 ELECTRICAL SITE PLAN
- E2 ONE-LINE DIAGRAM & MCC
- E3 ELECTRICAL LIGHTING PLAN
- E4 ELECTRICAL POWER PLAN
- E5 INSTRUMENTATION & CONTROLS PLAN
- E6 SCADA ANTENNA, WELL ELECTRICAL DETAIL & PANEL A SCHEDULE
- E8 CHLORINATION & MOTOR CONTROL DIAGRAMS
- E9 PLC POWER & CONNECTION DIAGRAMS
- E10 CONTROL SYSTEM DETAILS
- E11 ELECTRICAL SITE PLAN (NORTH BOOSTER)
- E12 ONE LINE DIAGRAM (NORTH BOOSTER)
- E13 SITE LIGHTING (SOUTH BOOSTER)
- E14 PRESSURE BOOST CONTROL (SOUTH BOOSTER) 1

ELECTRICAL DRAWING INDEX

- A AMPERES
- AC ALTERNATING CURRENT
- AFF ABOVE FINISHED FLOOR
- AFG ABOVE FINISHED GRADE
- AIC AVAILABLE INTERRUPT CURRENT
- ATS AUTOMATIC TRANSFER SWITCH
- AWG AMERICAN WIRE GAUGE
- C CONDUIT
- CB CIRCUIT BREAKER
- CKT CIRCUIT
- CLG CEILING
- EA EACH
- G GROUND
- GFI GROUND FAULT INTERRUPTER
- GRC GALVANIZED RIGID CONDUIT
- HID HIGH INTENSITY DISCHARGE
- HVAC HEATING, VENTILATING, & AC.
- J/JB JUNCTION BOX
- KW KILOWATT
- KWH KILOWATT HOUR
- M MAGNETIC CONTRACTOR COIL
- MCC MOTOR CONTROL CENTER
- MFG MANUFACTURER
- MT MOUNT
- MTD MOUNTED
- N NEUTRAL
- NC NORMALLY CLOSED
- NEC NATIONAL ELECTRICAL CODE
- NO NORMALLY OPEN
- NTS NOT TO SCALE
- OH OVER HEAD
- OL OVERLOAD
- RECPT RECEPTACLE
- RGS RIGID GALVANIZED CONDUIT
- RMC RIGID METAL CONDUIT
- ROD REQUIRED
- SH SHEET REFERENCE (PLAN SET)
- SS STAINLESS STEEL
- SURF SURFACE
- TVSS TRANSIT VOLTAGE SURGE SUPPRESSOR
- TYP TYPICAL
- UG UNDERGROUND
- V VOLT
- VA VOLT AMPERE
- W/ WITH
- WP WEATHER PROOF

- MOTOR
- MOTOR
- RELAY OR CONTACTOR COIL
- NORMALLY OPEN CONTACT
- NORMALLY CLOSED CONTACT
- PUSH BUTTON - NORMALLY OPEN
- HAND - OFF - AUTO SWITCH
- RUN TIME METER
- REMOTELY LOCATED DEVICE
- LED INDICATOR LIGHT - TYPE AS INDICATED
- TERMINAL STRIP CONNECTION
- COMPONENT TERMINAL CONNECTION

CONTROLS LEGEND



MOUNTING HEIGHTS

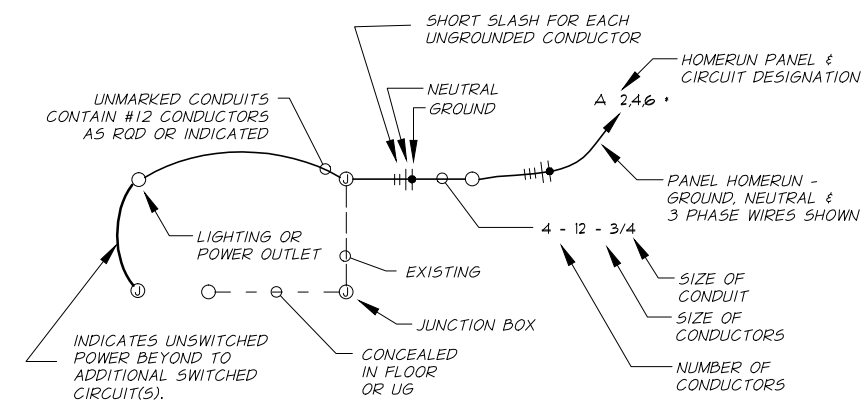
- KEYED NOTE REFERENCE
- NAME PLATE OR LEGEND PLATE TEXT HEIGHT
- EQUIPMENT CONNECTION POINT. CONTRACTOR TO PROVIDE MATERIALS & MAKE CONNECTION.
- JUNCTION BOX, CONTROL OR WIRING DEVICE. LETTER INDICATES TYPE.
- PANELBOARD. SEE SCHEDULE FOR TYPE.
- 120 VAC DUPLEX CONVENIENCE OUTLET.
- DOUBLE DUPLEX (4) RECEPTACLE - 120 VAC
- SPECIAL RECEPTACLE - TYPE AS REQD
- SWITCH, TYPE AS INDICATED
- THERMOSTAT SWITCH
- PHONE CONNECTION
- FLUORESCENT LIGHTING FIXTURE. LETTER REFERENCES FIXTURE SCHEDULE
- FLUORESCENT FIXTURE W/BATTERY BACKUP
- WALL MOUNTED EXTERIOR LIGHT.
- LIGHTED EXIT SIGN - SHADING DEPICTS FACE
- EXHAUST FAN - CEILING MOUNTED
- ELECTRIC HEATER
- DISCONNECT. TYPE AS SPECIFIED

ELECTRICAL LEGEND

ABBREVIATIONS



EXP.: JUNE 30, 2014



CIRCUIT SYMBOL DETAIL

NTS

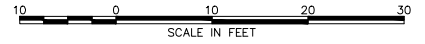
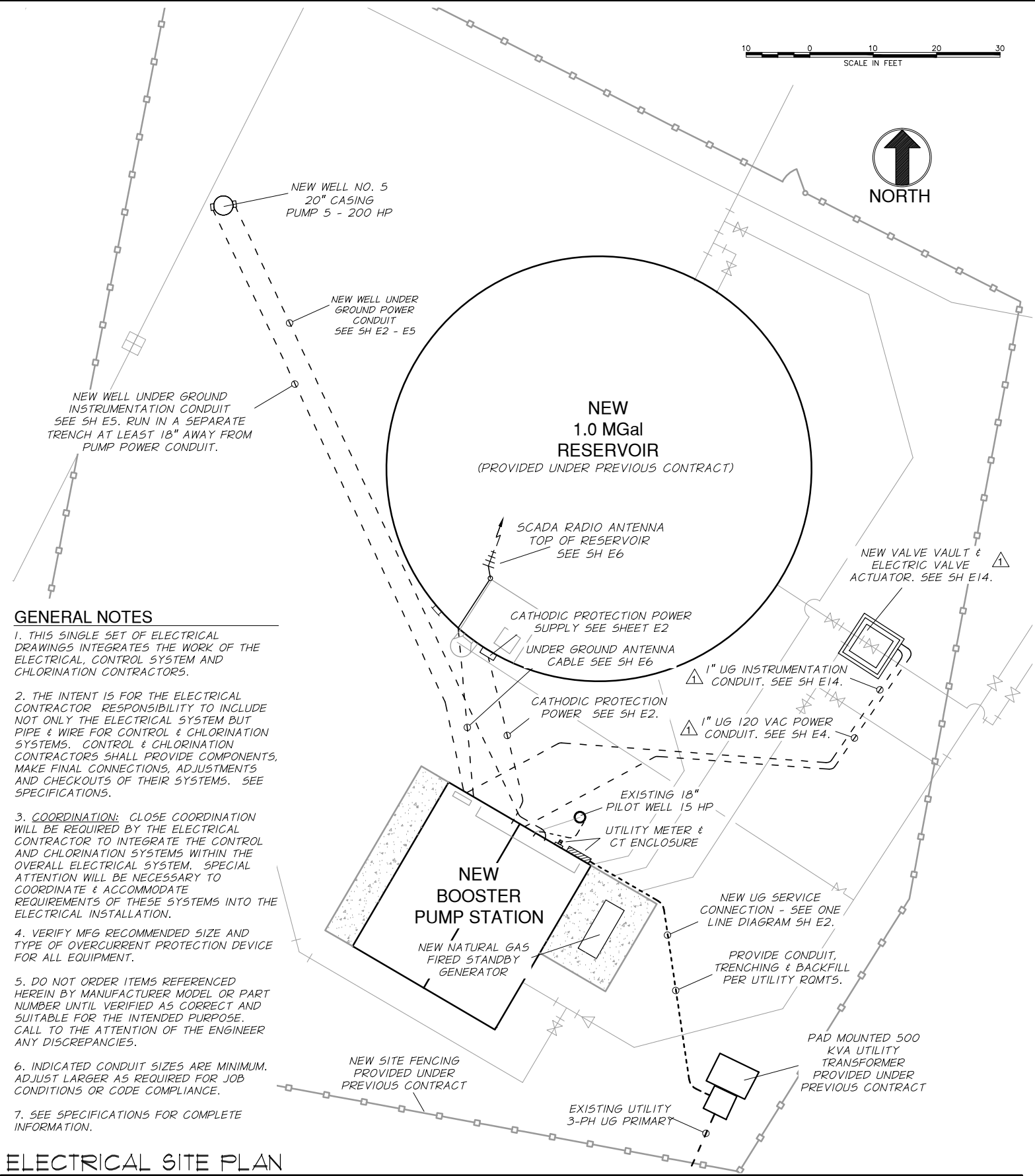
DESIGNED BY J. TERRY		XREFS:		JOB NUMBER 339-92		DATE 2013	
DRAWN BY J. TERRY				ACAD FILE:			
REVIEWED BY T. BAKER / A. RIEKE				COPYRIGHT 2011 BY ANDERSON-PERRY & ASSOC., INC.			

THIS DRAWING HAS BEEN REDUCED 50%. ADJUST SCALE ACCORDINGLY.

GENERAL NOTES

- THIS SINGLE SET OF ELECTRICAL DRAWINGS INTEGRATES THE WORK OF THE ELECTRICAL, CONTROL SYSTEM AND CHLORINATION CONTRACTORS.
- THE INTENT IS FOR THE ELECTRICAL CONTRACTOR RESPONSIBILITY TO INCLUDE NOT ONLY THE ELECTRICAL SYSTEM BUT PIPE & WIRE FOR CONTROL & CHLORINATION SYSTEMS. CONTROL & CHLORINATION CONTRACTORS SHALL PROVIDE COMPONENTS, MAKE FINAL CONNECTIONS, ADJUSTMENTS AND CHECKOUTS OF THEIR SYSTEMS. SEE SPECIFICATIONS.
- COORDINATION: CLOSE COORDINATION WILL BE REQUIRED BY THE ELECTRICAL CONTRACTOR TO INTEGRATE THE CONTROL AND CHLORINATION SYSTEMS WITHIN THE OVERALL ELECTRICAL SYSTEM. SPECIAL ATTENTION WILL BE NECESSARY TO COORDINATE & ACCOMMODATE REQUIREMENTS OF THESE SYSTEMS INTO THE ELECTRICAL INSTALLATION.
- VERIFY MFG RECOMMENDED SIZE AND TYPE OF OVERCURRENT PROTECTION DEVICE FOR ALL EQUIPMENT.
- DO NOT ORDER ITEMS REFERENCED HEREIN BY MANUFACTURER MODEL OR PART NUMBER UNTIL VERIFIED AS CORRECT AND SUITABLE FOR THE INTENDED PURPOSE. CALL TO THE ATTENTION OF THE ENGINEER ANY DISCREPANCIES.
- INDICATED CONDUIT SIZES ARE MINIMUM. ADJUST LARGER AS REQUIRED FOR JOB CONDITIONS OR CODE COMPLIANCE.
- SEE SPECIFICATIONS FOR COMPLETE INFORMATION.

ELECTRICAL SITE PLAN



1" = 10' - 0"

ELECTRO Tech
engineering, Inc.
368 S.W. FIFTH AVE.
ONTARIO, OR 97144
JOB #: 1132

(541) 889-5411
(208) 863-4300
F: (541) 889-2074
Jack@jackterry.net

apandersonperry
& associates, inc.
engineering surveying natural resources
LA GRANDE, OR. WALLA WALLA, WA.

CITY OF STANFIELD, OREGON
WATER SYSTEM IMPROVEMENTS
SOUTH STANFIELD BOOSTER PUMP STATION

ELECTRICAL SITE PLAN

SHEET

E1